

# DSC - Digital Strain Gauge for Embedding Overview

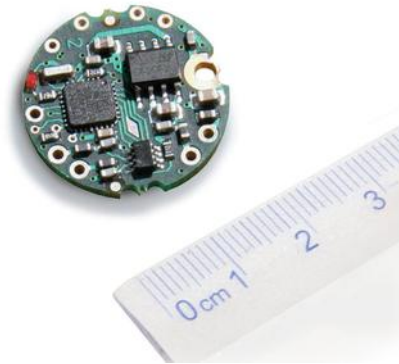
*Jan 2015*

# Precision Measurement

DSC



DCell



- High precision strain gauge signal conversion
- Sensor linearisation and temperature compensation
- Compatible with pressure transducers, load cells and torque sensors
- RS232 (DSC only), RS485, ASCII, Modbus, CAN and MantraCAN (J1939)
- Embedded version (DCell) fits into load cell body
- 6-18V dc Supply



# Accessories - mounting kits

- DSJ1 and enclosure - single channel

2 part field terminals  
Bus connectors for COMMS



- DSJ4 and enclosure - 4 channels

2 part field terminals  
Bus connectors for COMMS



Multiple DSJ1s or DSJ4s can be connected to the same bus for distributed applications (not RS232)

- DS485DIS

Displays up to 8 DSC's  
Sum, Gross, Net, Toggle



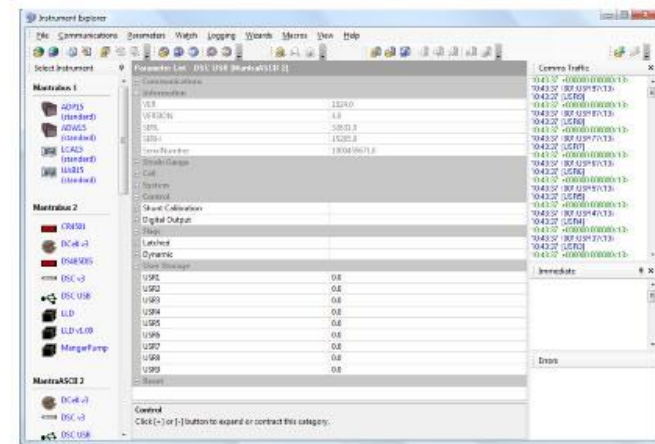
# Evaluation Kits

- RS232 & RS485 Kits available
- A low cost way of discovering the benefits of the DCell/DSC



# Software

- Instrument Explorer



- DSC 24 Channel Logging



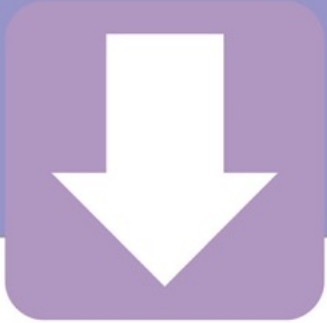
Both available for free download from our website: [mantracourt.com](http://mantracourt.com)



# Applications

- Dry Dock
  - Compression load cells
  - Daisy Chain to PC





Thank you for your attention

For further information visit:  
[mantracourt.com](http://mantracourt.com)